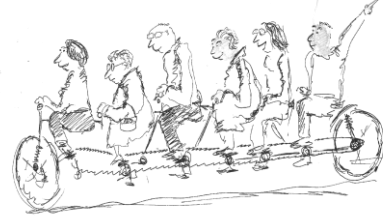




Discovery



DISCOVERY PROGRAMME INFORMATION SHEET

DISCOVERY is a community development programme designed to enable churches in priority areas (PAs) to engage with their communities to bring transformation and hope. The programme uses visuals, games and experiential activities to make learning and reflection meaningful, accessible and easy to accomplish.

Through a series of workshops, participants are involved in team building, spiritual reflection and basic community development activities.

The Discovery Programme came together through a partnership between Tearfund and Faith in Community Scotland's Transformation Team.

Discovery

Works with people where they're at and, in their local communities, helps them to decide what the needs may be. There are 6 Toolkits with 4 to 5 packs of practical learning resources in each:

- Celebrating who we are and where we live
- Understanding the needs of the community
- Gathering specific information on community needs
- Dreaming dreams and mobilising communities
- Planning for Action
- Organising ourselves and building a team

Purpose:

- To bring positive change to the community
- To build confidence in working together as a team
- To reflect on the bible and what it says about our role in meeting the needs of those who are marginalised and vulnerable

Process:

- Use of Enquiry Process and gather baseline data
- Development of an Action Plan document to monitor progress
- Regular fortnightly meetings
- Evaluation at midpoint in process and at the end of the engagement to assess effectiveness of the support